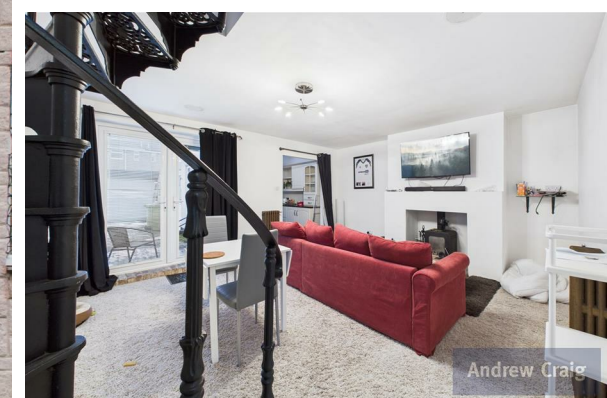
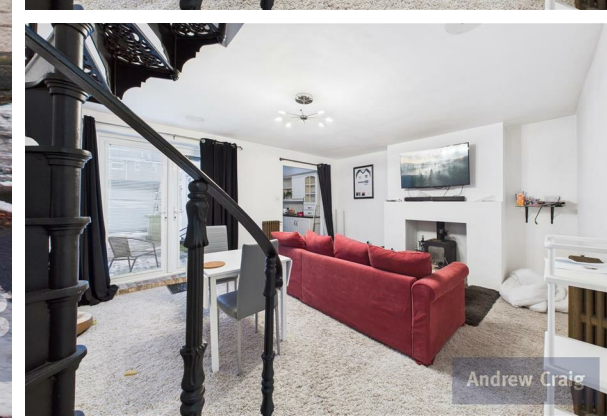


Andrew Craig



Andrew Craig



Andrew Craig

29 Thomas Street South, Ryhope, Sunderland, SR2 0PD

£85,000



### Directions

### THE PROPERTY

Offered with no upper chain, this fabulous mid-terraced cottage is ideally located in an idyllic, sought-after area of Ryhope Village. Thomas Street South is exceptionally well-placed for seamless access to the picturesque seafront for coastal walks and outings, as well as a range of local amenities including:- Schools and nurseries, shops and supermarkets, parks, gyms, restaurants and eateries. The area is also well-served by a range of road links and frequent bus services for seamless transportation throughout the region.

The deceptively spacious internal accommodation was once a two bedroom property, but has been adapted into a well-appointed one bedroom living space, with the addition of a useful boarded loft room with en-suite shower. Briefly comprises:- Entrance hallway, generous double bedroom, bright and airy open-plan lounge/dining room with log burner and French doors flowing out into the rear yard, open to a stylish well-fitted kitchen with granite work surfaces. From the kitchen, the rear lobby provides access to a modern bathroom, while stairs lead you up to the boarded loft room with lighting, power, velux windows and en-suite shower room. Externally, there is an enclosed yard to the rear with electric roller-shutter door and outdoor power sockets.

Properties in this fantastic location are in high demand, therefore an early viewing is essential to avoid disappointment.

Property details provided by Andrew Craig  
EPC rating: E  
Council Tax Band: A  
Tenure: Freehold

For Sale By Auction [www.agentspropertyauction.com](http://www.agentspropertyauction.com) LIVE ONLINE AUCTION 26 February 2026 OPTION 2

### SITUATION